

Fresno Irrigation District Redistricting Summary Statistics

Final – Division Summary Statistics

02/15/2022



Ideal Population Criterion

Ideal Population	118,006
Overall Range	7.9%
< 5.0%	5.0 - 10.0%
> 10.0%	

2020 Census P.L. 94-171 Redistricting
Data Summary Files - Total Population.

Total Population & Deviation per District

Division ID	Total Population	Over / Under Ideal	Deviation From Ideal
1	117,123	(883)	(0.7)%
2	116,556	(1,450)	(1.2)%
3	116,836	(1,170)	(1.0)%
4	124,416	6,410	5.4%
5	115,098	(2,908)	(2.5)%

Total Population by Race/Ethnicity per District

Division ID	White	Black or African American	American Indian or Alaska Native	Asian	Native Hawaiian and Pacific Islander	Some Other Race	Two or More Races	Hispanic/Latino
1	49.1%	2.2%	0.5%	15.2%	0.1%	0.6%	4.7%	27.5%
2	36.2%	6.3%	0.7%	10.2%	0.3%	0.6%	4.0%	41.8%
3	15.4%	5.6%	0.5%	22.4%	0.1%	0.5%	2.4%	53.0%
4	16.1%	7.9%	0.7%	10.8%	0.1%	0.5%	2.4%	61.4%
5	38.7%	5.6%	0.6%	13.6%	0.2%	0.6%	3.9%	36.9%

2020 Census P.L. 94-171 Redistricting Data Summary Files - Total Population by Race and Hispanic/Latino Origin.

Total Population by Race/Ethnicity per District (Counts)

Division ID	White	Black or African American	American Indian or Alaska Native	Asian	Native Hawaiian and Pacific Islander	Some Other Race	Two or More Races	Hispanic/Latino
1	57,499	2,580	570	17,827	175	696	5,539	32,237
2	42,181	7,326	823	11,865	294	673	4,658	48,736
3	18,030	6,504	617	26,212	123	630	2,780	61,940
4	20,061	9,877	829	13,421	141	673	2,968	76,446
5	44,554	6,487	636	15,596	181	661	4,477	42,506

2020 Census P.L. 94-171 Redistricting Data Summary Files - Total Population by Race and Hispanic/Latino Origin.

Fresno Irrigation District Redistricting Summary Statistics

Final – Division Summary Statistics

02/15/2022



CVAP by Race/Ethnicity per District

Division ID	White	Black or African American	American Indian or Alaska Native	Asian	Native Hawaiian and Pacific Islander	Two or More Races	Hispanic/Latino
1	59.9%	1.9%	0.3%	12.6%	0.1%	1.6%	23.4%
2	47.8%	6.7%	0.6%	8.2%	0.1%	2.2%	34.0%
3	25.3%	6.7%	0.7%	20.8%	0.2%	1.4%	44.7%
4	26.4%	11.2%	0.7%	9.6%	0.1%	1.5%	50.1%
5	51.2%	6.3%	0.2%	11.0%	0.0%	1.6%	29.4%

California Statewide Database Unadjusted 2015-2019 American Community Survey Citizen Voting-age Population (CVAP) by Race and Ethnicity Special Tabulation. Rounding of estimates may lead to summation of percentages not equal to 100% (+/- 1%).

CVAP by Race/Ethnicity per District (Counts)

Division ID	White	Black or African American	American Indian or Alaska Native	Asian	Native Hawaiian and Pacific Islander	Two or More Races	Hispanic/Latino
1	44,434	1,437	252	9,376	80	1,179	17,357
2	39,364	5,537	524	6,767	104	1,825	27,996
3	16,216	4,292	417	13,344	117	926	28,683
4	18,162	7,730	506	6,633	45	1,001	34,448
5	40,155	4,941	177	8,589	0	1,262	23,059

California Statewide Database Unadjusted 2015-2019 American Community Survey Citizen Voting-age Population (CVAP) by Race and Ethnicity Special Tabulation. Rounding of estimates may lead to summation of percentages not equal to 100% (+/- 1%).

Compactness Measures per District

Division ID	Polsby-Popper	Reock	Convex Hull	Length-Width	Schwartzberg
1	0.11	0.22	0.57	0.53	2.98
2	0.31	0.26	0.70	0.43	1.79
3	0.17	0.31	0.61	0.86	2.39
4	0.15	0.35	0.66	0.57	2.55
5	0.22	0.24	0.63	0.72	2.16

A single definitive measure of compactness does not exist, and no specific scores for any measures indicate satisfactory or unsatisfactory

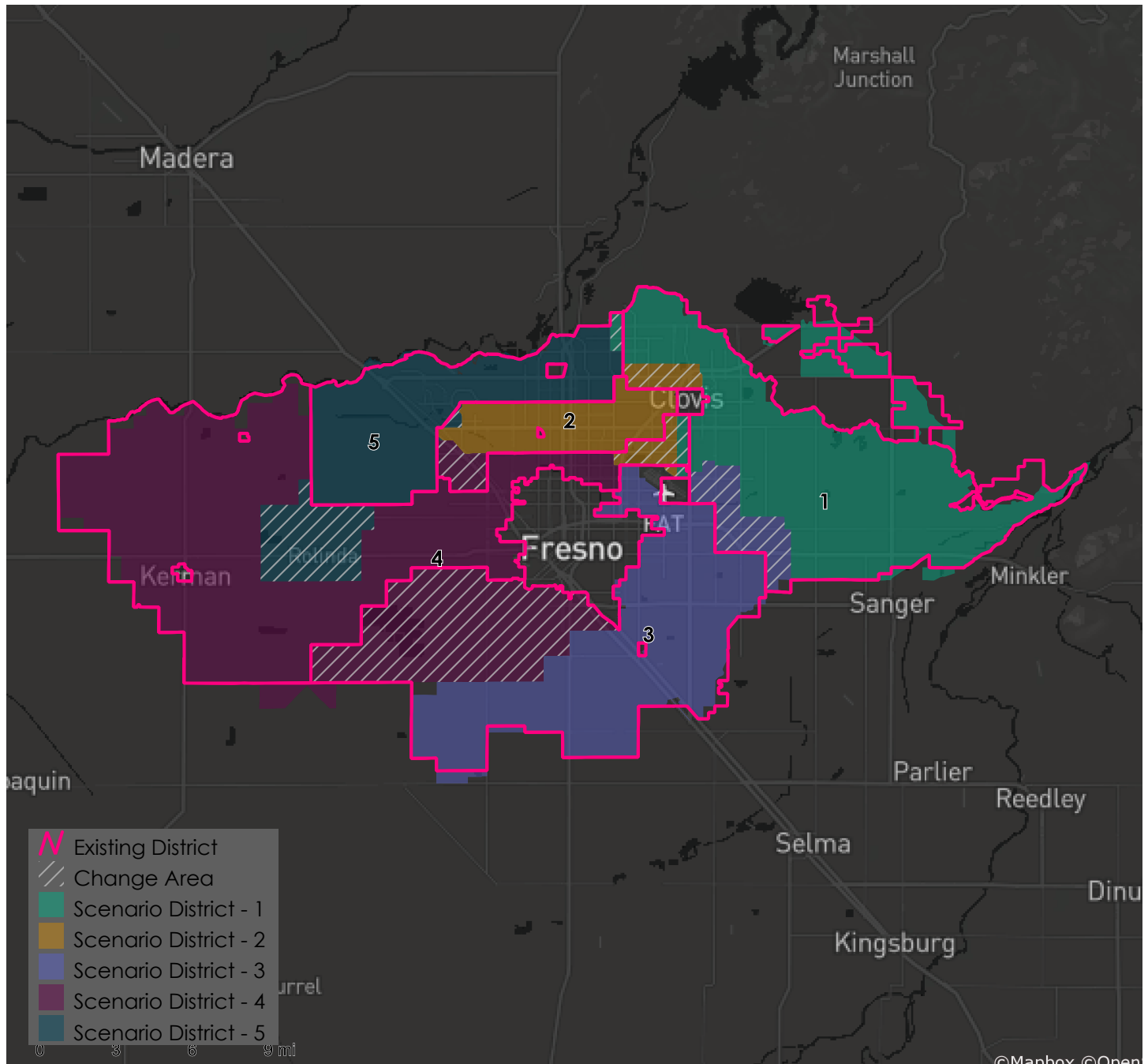
Fresno Irrigation District Redistricting Summary Statistics

Final – Division Summary Statistics

02/15/2022



compactness. Measures are typically based on comparing geometric features of the district (e.g. perimeters, areas) to the features of a related base geometric object (e.g. minimum bounding circle, convex hull). In practice, compactness tends to be assessed by a visual test—a district in which people generally live near each other is usually more compact than one in which they do not. In California, districts are compact when they do not bypass nearby population for people farther away. Note that Polsby-Popper, Reock, Convex Hull, and Length-Width scores fall within the range of 0-1, with 0 being the least compact and 1 being the most compact. In comparison, a Schwartzberg score of 1 is the most compact and higher scores are increasingly less compact.



Metadata

Run Time Stamp: 2022-02-15 10:31:15

Fresno Irrigation District Redistricting Summary Statistics

Final – Division Summary Statistics

02/15/2022



Workflow Directory: X:\F2148_Fresno_Irrigation_District\Projects\Alteryx\

District Scenario: File: gdb:X:\F2148_Fresno_Irrigation_District\Data\Redist.gdb\|Districts_Scenario_6