

# Fresno Irrigation District Redistricting Summary Statistics

Final – Division Summary Statistics

02/15/2022



## Ideal Population Criterion

Ideal Population	118,006
Overall Range	7.9%
< 5.0%	5.0 - 10.0%
> 10.0%	

2020 Census P.L. 94-171 Redistricting  
Data Summary Files - Total Population.

## Total Population & Deviation per District

District ID	Total Population	Over / Under Ideal	Deviation From Ideal
1	117,123	(883)	(0.7)%
2	116,556	(1,450)	(1.2)%
3	116,836	(1,170)	(1.0)%
4	124,416	6,410	5.4%
5	115,098	(2,908)	(2.5)%

## Total Population by Race/Ethnicity per District

District ID	White	Black or African American	American Indian or Alaska Native	Asian	Native Hawaiian and Pacific Islander	Some Other Race	Two or More Races	Hispanic/Latino
1	49.1%	2.2%	0.5%	15.2%	0.1%	0.6%	4.7%	27.5%
2	36.2%	6.3%	0.7%	10.2%	0.3%	0.6%	4.0%	41.8%
3	15.4%	5.6%	0.5%	22.4%	0.1%	0.5%	2.4%	53.0%
4	16.1%	7.9%	0.7%	10.8%	0.1%	0.5%	2.4%	61.4%
5	38.7%	5.6%	0.6%	13.6%	0.2%	0.6%	3.9%	36.9%

2020 Census P.L. 94-171 Redistricting Data Summary Files - Total Population by Race and Hispanic/Latino Origin.

## Total Population by Race/Ethnicity per District (Counts)

District ID	White	Black or African American	American Indian or Alaska Native	Asian	Native Hawaiian and Pacific Islander	Some Other Race	Two or More Races	Hispanic/Latino
1	57,499	2,580	570	17,827	175	696	5,539	32,237
2	42,181	7,326	823	11,865	294	673	4,658	48,736
3	18,030	6,504	617	26,212	123	630	2,780	61,940
4	20,061	9,877	829	13,421	141	673	2,968	76,446
5	44,554	6,487	636	15,596	181	661	4,477	42,506

2020 Census P.L. 94-171 Redistricting Data Summary Files - Total Population by Race and Hispanic/Latino Origin.

# Fresno Irrigation District Redistricting Summary Statistics

Final – Division Summary Statistics

02/15/2022



## CVAP by Race/Ethnicity per District

District ID	White	Black or African American	American Indian or Alaska Native	Asian	Native Hawaiian and Pacific Islander	Two or More Races	Hispanic/Latino
1	59.9%	1.9%	0.3%	12.6%	0.1%	1.6%	23.4%
2	47.8%	6.7%	0.6%	8.2%	0.1%	2.2%	34.0%
3	25.3%	6.7%	0.7%	20.8%	0.2%	1.4%	44.7%
4	26.4%	11.2%	0.7%	9.6%	0.1%	1.5%	50.1%
5	51.2%	6.3%	0.2%	11.0%	0.0%	1.6%	29.4%

California Statewide Database Unadjusted 2015-2019 American Community Survey Citizen Voting-age Population (CVAP) by Race and Ethnicity Special Tabulation. Rounding of estimates may lead to summation of percentages not equal to 100% (+/- 1%).

## CVAP by Race/Ethnicity per District (Count)

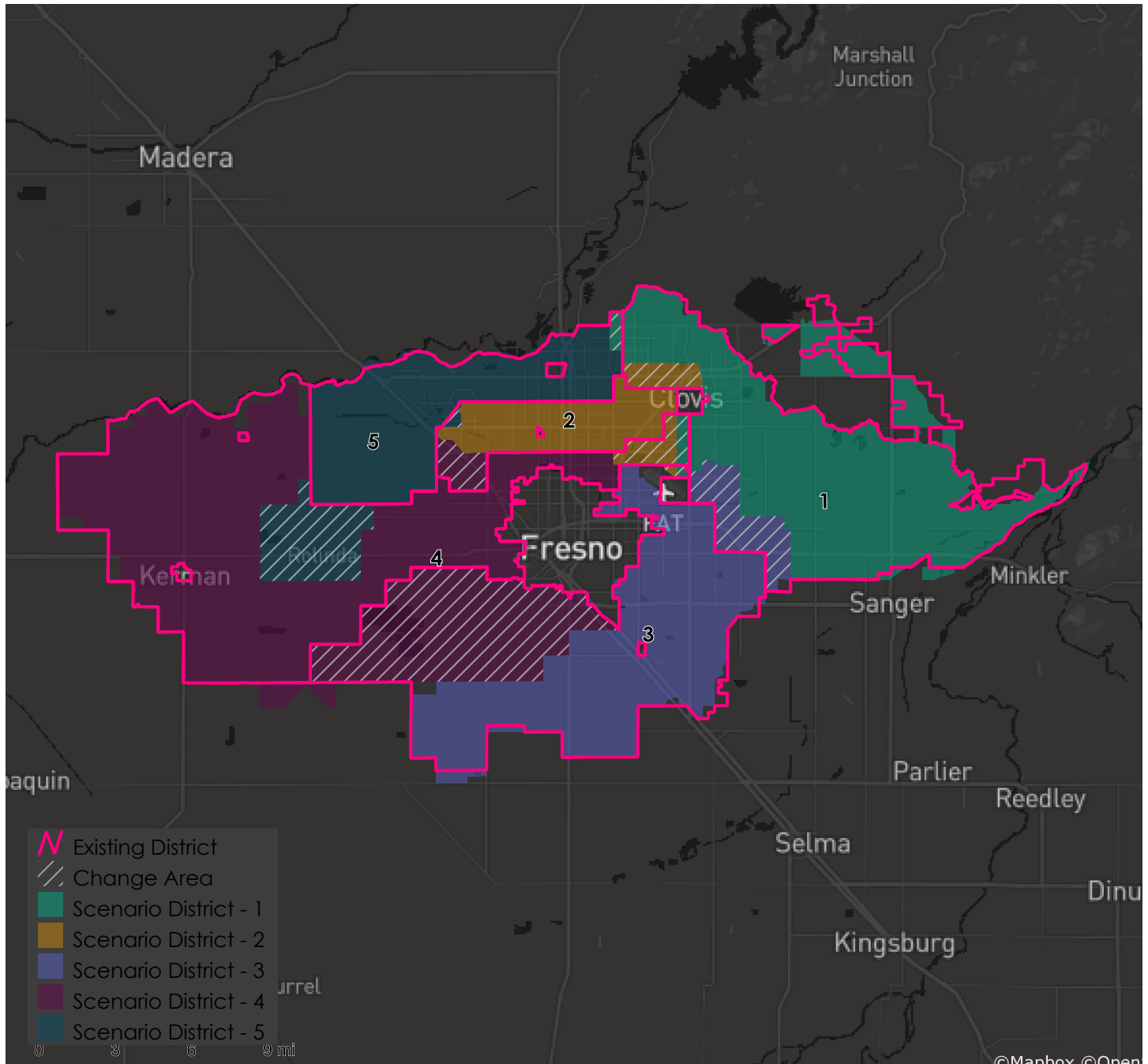
District ID	White	Black or African American	American Indian or Alaska Native	Asian	Native Hawaiian and Pacific Islander	Two or More Races	Hispanic/Latino
1	44,434	1,437	252	9,376	80	1,179	17,357
2	39,364	5,537	524	6,767	104	1,825	27,996
3	16,216	4,292	417	13,344	117	926	28,683
4	18,162	7,730	506	6,633	45	1,001	34,448
5	40,155	4,941	177	8,589	0	1,262	23,059

California Statewide Database Unadjusted 2015-2019 American Community Survey Citizen Voting-age Population (CVAP) by Race and Ethnicity Special Tabulation. Rounding of estimates may lead to summation of percentages not equal to 100% (+/- 1%).

# Fresno Irrigation District Redistricting Summary Statistics

Final – Division Summary Statistics

02/15/2022



## Metadata

Run Time Stamp: 2022-02-15 10:24:05  
Workflow Directory: X:\F2148\_Fresno\_Irrigation\_District\Projects\Alteryx\  
District Scenario: File: gdb:X:\F2148\_Fresno\_Irrigation\_District\Data\Redist.gdb\|Districts\_Scenario\_6